

20 minutes walk northwest from JR Akabane Station lies the heart of PGSM, Akabane Bridge. Featured in about every second act, it became something like the symbol of the show. The reason why it has been picked is probably because – like all the other locations I've seen – it is a truly beautiful spot, especially in spring, and you can film it from all angles imaginable. I am far from being an expert on this, but I believe its a director's dream. A fan's dream it is even more so – I was probably just imagining it, but the place was radiating with the calm and friendly aura of Sailor Moon, and there is no place in Japan where I felt as much at home as there. If one day I would have to live under a bridge, this would be the one ;>

AKABANE PARK BRIDGE

TOUR



Time: 2 hours
Accessibility: ☆☆☆
Overall Immersion: ☆☆☆☆☆
Overall Attractiveness: ☆

Every tour description starts with four values: time, accessibility, immersion and attractiveness. Here's what they are about:

Time

The approximate amount of time for the tour, including the time to get back to the starting point.

Accessibility

This rating shows how easy you can get to the location, both in means of time and effort.

- ☆☆☆☆☆ Practically lies by the way, with no trouble finding it whatsoever
- ☆☆☆☆ Needs a little detour, but still very easy to find without much time to get there
- ☆☆☆ Closeby, but needs some effort and orientation skills to find
- ☆☆ A real challenge to find, even with this location guide at hand
- ☆ Only recommended if you have a lot of time and at least basic language skills

Immersion

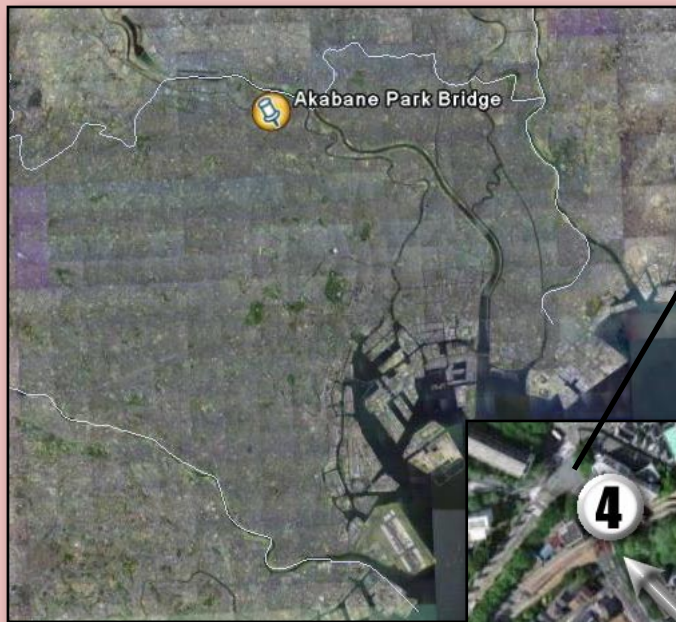
This is a very subjective rating of mine, judging who deeply one feels drawn into the World of Sailor Moon by visiting that location.

- ☆☆☆☆☆ Perfect immersion - a must for every diehard PGSM fan
- ☆☆☆☆ Feels very much like the real deal, with very little distractions
- ☆☆☆ As long as you close your eyes and block out any distractions, you can still get a scent of PGSM
- ☆☆ Only recommended, if this location is part of your favourite scene
- ☆ Going there is hardly worth it

Attractiveness

Another important rating that tells you if the location holds attractions beyond PGSM that allow you to take your travel companions with you, even if they're not into PGSM

- ☆☆☆☆☆ Full fledged tourist spot - nobody will even notice why you're really there
- ☆☆☆☆ Very nice place to go for everyone, not just PGSM fans
- ☆☆☆ Quite nice, but only if you're into this kind of location
- ☆☆ You will have to make up a very good story to lure your folks there
- ☆ Better go there on your own



Above: The general position of Akabane within Tokyo. The easiest way to get there is by JR trains.

Latitude: 35°46'51.89"N
Longitude: 139°42'49.25"E

Leave JR Akabane Station through the West Exit and follow the arrows. Many thanks to Google Earth for the perfect satellite photos. They almost look like the real deal. Almost ...





The bridge actually connects two parts of a park. The sign reads:

„About the usage of this park

The park is meant as a place for everyone's enjoyment and recreation. So that everyone can have a pleasant time here, let's pay attention to the following points:

- Let's stop riding motorbikes or bicycles into the park.
- Let's abandon dangerous games like baseball, letting off fireworks, and making camp fires.
- Let's stop bringing dogs here.
- Let's take our own garbage home with us.
- Let's treat the equipment, trees, and flowers with care.
- Apart from that, let's not do things likely to annoy people using the park or living nearby.“

(Thanks to David Chart for helping out with the translations!)

